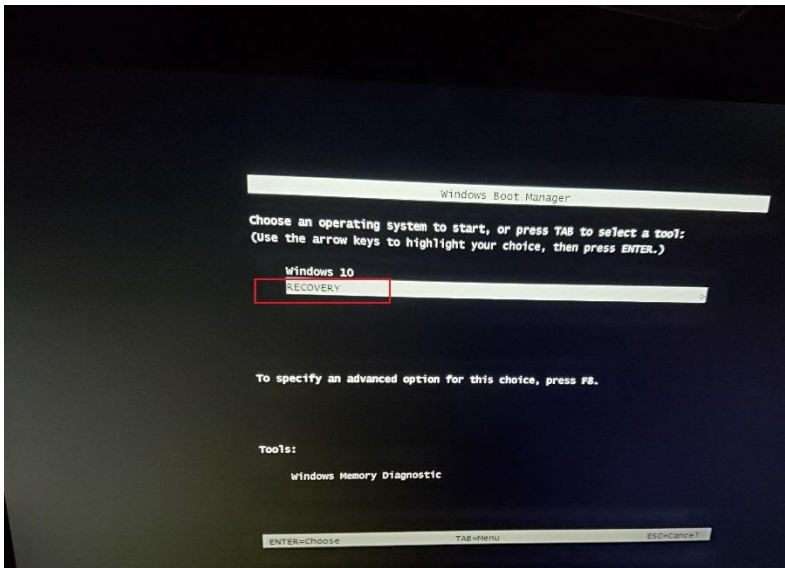
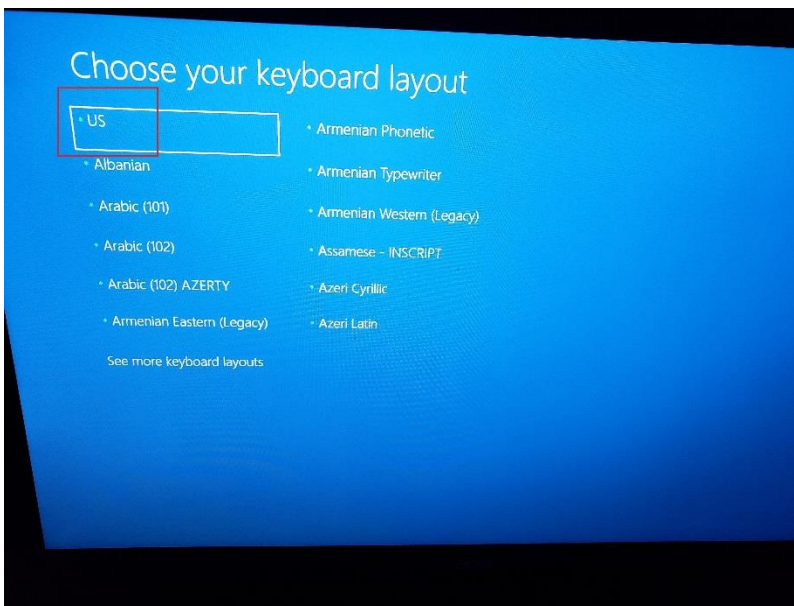


Windows 10 Recovery

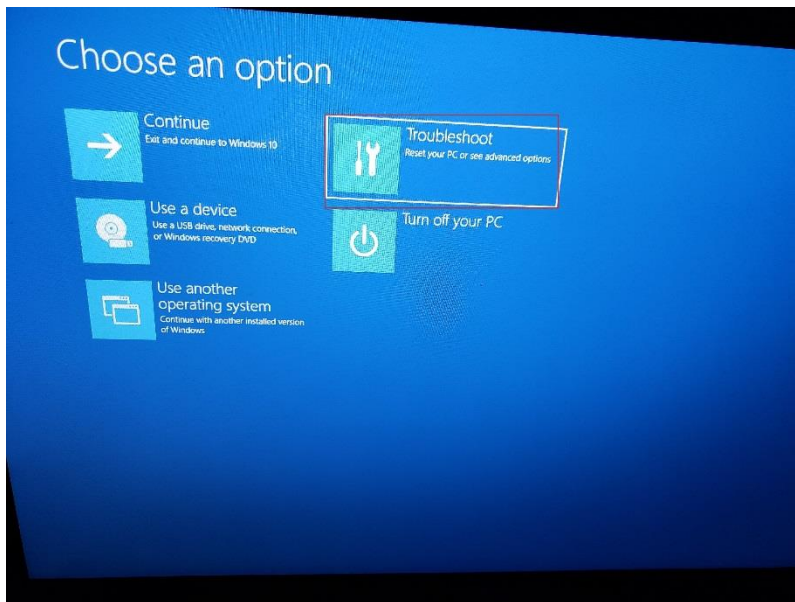
- 1) Boot up the NVR and you will be prompted with “Windows 10, Recovery or Windows Memory Diagnostic.” Choose “Recovery” option.



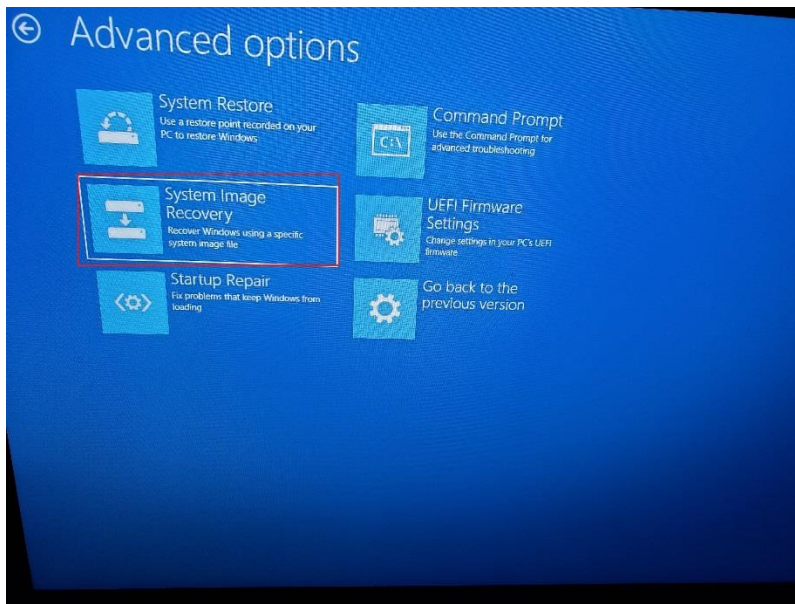
- 2) After choosing recovery you will be prompted to a blue screen to “Choose your keyboard layout.” Select the “US” layout.



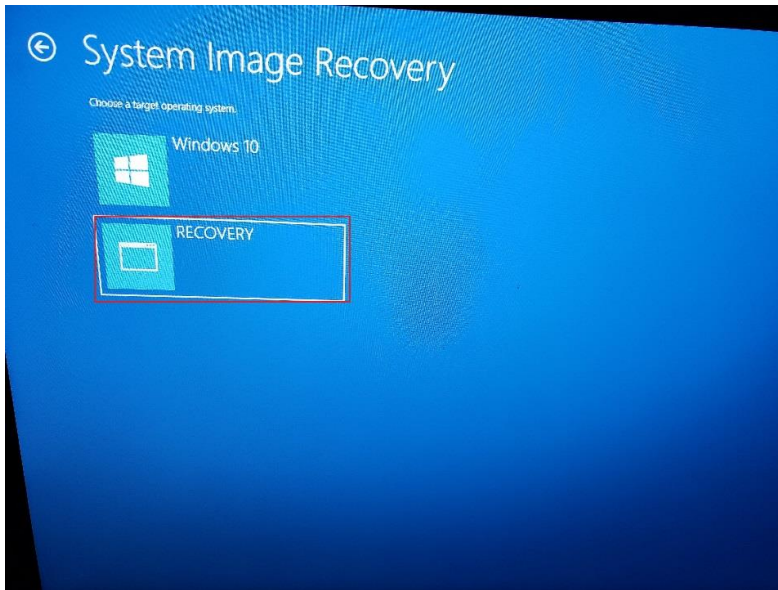
- 3) After selecting the keyboard layout you will be prompted to “Choose an option.” Windows can sometimes boot directly to this screen. From here you will choose “Troubleshoot.”



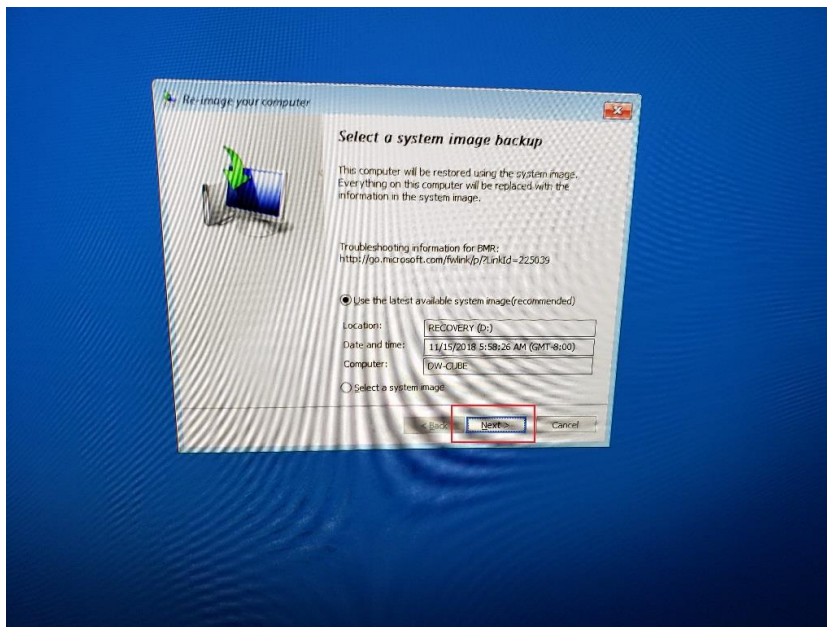
- 4) Next you should be at the “Advanced options” screen. From here you will select “System Image Recovery.”



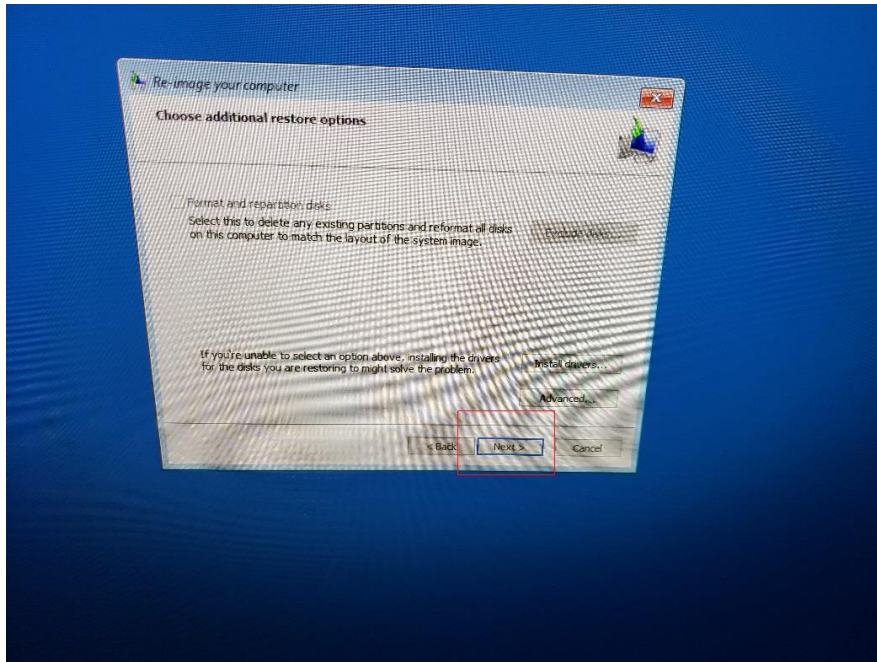
- 5) Next you should be at the “System Image Recovery” screen. Select “RECOVERY.”



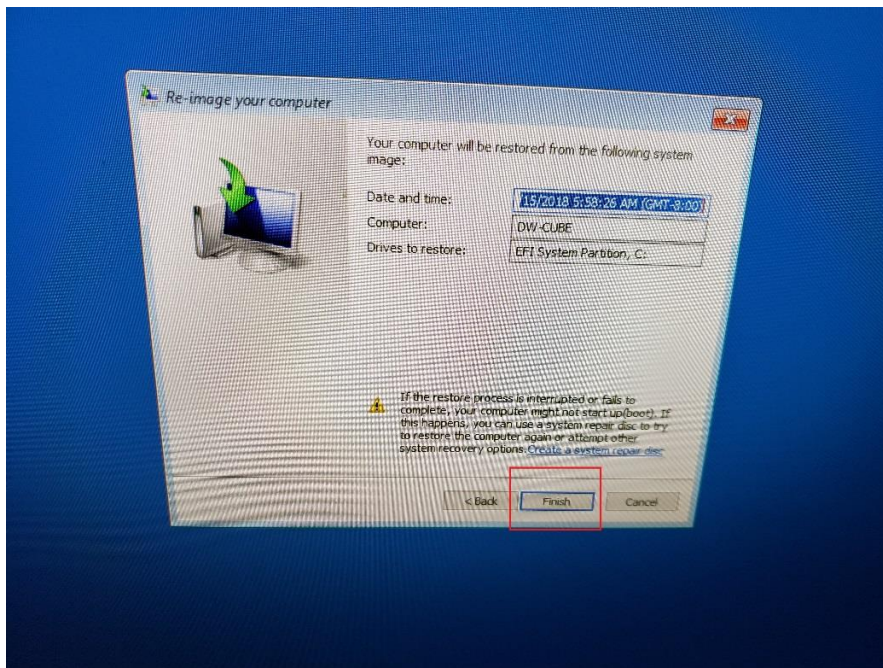
- 6) You should now have a dialog box showing “Select a system image backup.” This should be showing you the location of the recovery, the date and time the recovery was created and the computer name. From here you will select next.



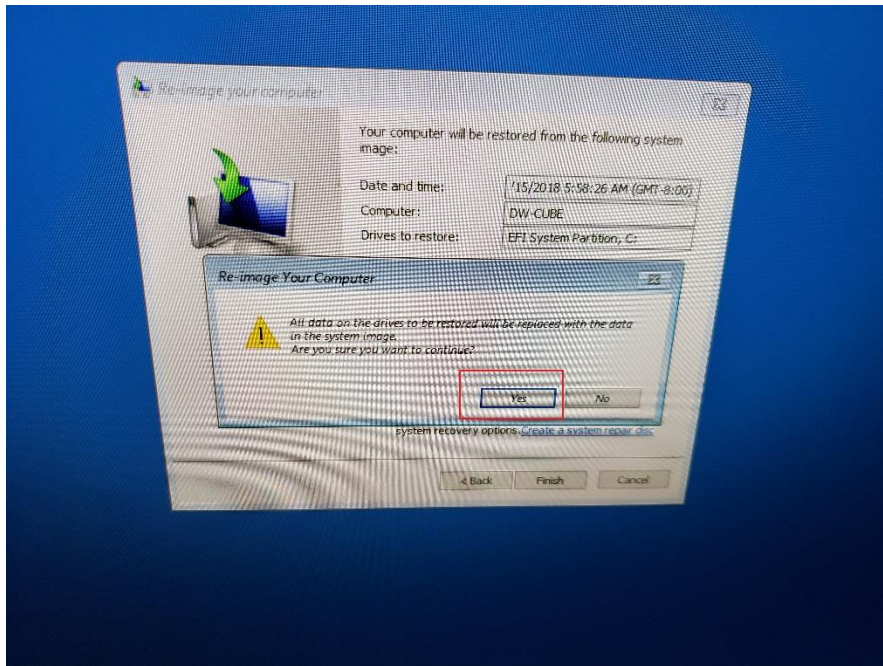
- 7) You should now have a new dialog box showing “Choose additional restore options.” From here you will click next.



- 8) You should now have a dialog box showing you the system will be restored from the following image. This should show you the date and time the backup was created, computer name and the drive it will be recovering and click next.



- 9) You should now receive a warning that all data on drives will be restored and replaced the data in the system image. Click "Yes."



10) The NVR should now be doing its recovery.

